



# MAP WORLD FORUM

22-25 January 2007  
HYDERABAD, INDIA

# Map World Forum

**MAP WORLD FORUM** will be a medium of convergence of various stakeholders of global geospatial community and its integration with end users of geospatial information. Map World Forum will be a combination of activities in the form of seminars, workshops and panel discussions covering technology to policy to user oriented themes at global level. Framework of Map World Forum will encourage various international professional societies focusing on different sub domains of geospatial community to discuss latest developments and its integration with other sub-domains (Remote Sensing, Cartography, Photogrammetry, GIS, Surveying and Positioning) within the geospatial community and also with other related domains (Information Technology, Architecture, Engineering, and Social Sciences).

**MAPWORLD FORUM** will act as a facilitator to participating professional agencies to organize activities (seminars, workshops, training and panel discussions) according to their area of specialization and interest. Each activity will be designed primarily by the respective Participating Agency in consultation with International Advisory Board.



**MAP  
WORLD  
FORUM**

CARTOGRAPHY  
GEOGRAPHICAL INFORMATION SYSTEMS  
PHOTOGRAMMETRY  
REMOTE SENSING  
SURVEYING + POSITIONING

**22-25 JANUARY 2007**

HYDERABAD INTERNATIONAL  
CONVENTION CENTRE,  
HYDERABAD, INDIA

[www.MapWorldForum.org](http://www.MapWorldForum.org)

PRESENTED BY  
**GIS  
DEVELOPMENT**

# Welcome Message

KAPIL SIBAL | **Honorable Minister**

| Science & Technology and Ocean Development, Government of India |



Government of India

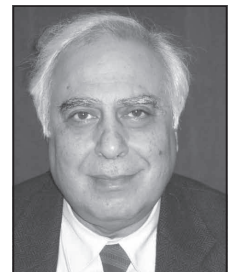
The Indian growth story is scaling new heights every day and it continues to surprise us with newer and newer facets of development. From science to IT, from manufacturing to biotech, from aviation to agriculture, there is a new and exciting story of fast track development.

India has slowly started to take a leadership role in attracting foreign capital in several sectors, including the high-tech scientific research. Our country is becoming an example to the world where the science and technology development is closely linked to the rural development and entrepreneurship.

In this positive growth scenario, the Indian geospatial community is making rapid strides too. Recently, we have reviewed our mapping policies and guidelines to suit the ever-increasing usage of geographic information in every walk of life. Government of India is committed to create, manage and disseminate geospatial information and use it to the best possible manner and improving the quality of life of its citizens for development of the nation. Establishment of National Spatial Data Infrastructure, which has been approved by the cabinet, recently is a very important step forward in this direction.

India is now being seen as a hub of economic activity globally. The Indian Government is committed that this economic leadership should also be visible in the area of science. Keeping this in mind, we have planned to create the 'Map World Forum', which will try to bring the global leadership in geospatial sciences at one mega forum. This platform will be a rare opportunity where for the first time the various leading organisations, both public, private and scientific research associations, will come under one roof to discuss the challenges and opportunities for the geospatial science and technology growth and its role for human development in the next decade.

I on my behalf and on behalf of the Ministry of Science and Technology, Government of India, am happy to invite you to the 'Map World Forum' and look forward to meet you in Hyderabad on 22nd January 2007.



(KAPIL SIBAL)

# Advisory Board

## PATRON:

**Kapil Sibal**  
Minister of Science &  
Technology and Ocean  
Development,  
Government of India

## CHAIRMAN:

**Dr. T Ramasamy**  
Secretary, Department of  
Science and Technology,  
Government of India

## CO-CHAIRMAN:

**Dr. M P Narayanan**  
President, GIS Development,  
India

## CONVENOR:

**Sanjay Kumar**  
CEO, GIS Development,  
India

## Prof. A R Dasgupta

Distinguished Professor,  
University of BISAG, India

## Dato' Dr. Abdul Kadir Bin Taib

DSDK, SDK, KMN,  
Dy. Director General, JUPEM,  
Malaysia

## Akira Yaguchi

Director General, Geographical  
Survey Institute, Japan

## Basanta Shrestha

Head, MENRIS, International  
Centre of Integrated Mountain  
Development, Nepal

## Bob Morris

President, Geospatial Imaging,  
Leica Geosystems, USA

## Prof. Christian Heipke

Institute of Photogrammetry  
and Geoinformation, University  
of Hanover, Germany

## Prof. George Cho

University of Canberra, Australia

## Prof. Harlan Onsrud

President, Global Spatial Data  
Infrastructure

## Prof. Dr. Ind. Holger Magel

President, Federation of  
International Surveyors

## Prof. Ian Dowman

President, International Society of  
Photogrammetry and Remote  
Sensing

## Jeff Thurston

Editor, GEOconnexions, UK

## Joe Francica

Editor, Directions Magazine, USA

## Jon Fairall

Editor, Asian Surveying and  
Mapping, Australia

## Prof. Josef Stroble

University of Salzburg, Austria

## KCM Kumar

Managing Director, Speck  
Systems, India

## K K Singh

CMD Rolta India Ltd., India

## Dr K Radhakrishnan

Director, NRSA, India

## Brig. Khalifa Al Rumaithi

Director, Military Survey  
Department, Abu Dhabi, UAE

## Kiran Karnik

President, NASSCOM, India

## Major General M Gopal Rao

Surveyor General of India

## Maneesh Prasad

Director, GIS Development &  
Editor, Location, India

## Prof. Martien Molenaar

Rector, ITC The Netherlands

## Mark E Reichardt

President, Open Geospatial  
Consortium

## Prof. Martien Molenaar

Rector, ITC, The Netherlands

## Mathias Lemmens

Editor, GIM International, The  
Netherlands

## Matt Ball

Editor, Geo World, USA

## Emeritus Prof. Michael

**Blakemore**  
University of Durham, UK

## Mike McGill

Director, Digital Globe, USA

## Prof. Milan Konency

President, International  
Cartographic Association

## Er. Mohamed Al Zaffin

Director, GIS Centre, Dubai  
Municipality, UAE

## Dr. Er Mohamad Rukieh

Director General, General  
Organisation of Remote Sensing,  
Syria

## Er. Muhammad Alrajhi

Director General of Surveying  
and Mapping, Ministry of  
Municipal and Rural Affairs,  
Kingdom of Saudi Arabia

## Mohan Reddy

Chairman, Infotech Enterprises,  
India

## Peter Batty

Chief Technology Officer,  
Intergraph, USA

## Peter Holland

President, UNPCGIAP

## Preetha R Pulusani

USA

## Dr. Prithvish Nag

Director, NATMO, Department  
of Science and Technology, India

## Dr. R Siva Kumar

Head – NRDMS & NSDI,  
Department of Science and  
Technology, Government of India

## Dr. Ravi Gupta

Director, Centre for Science,  
Development and Media Studies,  
India

## Robert M Samborski

Executive Director, Geospatial  
Information Technology  
Association, USA

## Roger Longhorn

Director, Info-Dynamics Research  
Associates Ltd.

## Ir. Rudolf W. Matindas

Head, The National Coordination  
Agency for Survey and Mapping,  
Indonesia

## Maj Gen Eng. Saliem M Khalife

Director General, Royal  
Jordanian Geographic Centre,  
Jordan

## Sridhar Murthy

Executive Director, Antrix  
Corporation Ltd., India

## Dr. Thongchai Charupatt

Executive Director,  
Geo-Informatics and Space  
Technology Development  
Agency, Thailand

## V K Menon

Member, NDMA, India

# Partners

## PRESENTED BY



### PRINCIPAL SPONSOR



Department of Science and Technology  
Government of India

### PLATINUM SPONSORS



### GOLD SPONSOR



### SILVER SPONSOR



## IN ASSOCIATION WITH



## MEDIA PARTNERS



## CO-SPONSORS



Royal Jordanian Geographic Centre, Jordan

# Messages



PROF. MILAN KONECNY

| **President** |  
| International Cartographic Association  
(ICA) |

Contemporary World has many complex problems which could be solved only in co-operation with geodisciplines including cartography and non-geoscientific ones. ICA initiated cooperation with its sisters organizations (geo) to coordinate efforts and solve issues highlighted by UN. The key issues are to survive human lives, improve quality of lives, to deal with crises management situations, etc. All geo-disciplines will continue to develop as unique, independent, sovereign organizations dealing with specific scientific subjects. While we continue to work in this direction, there is an urgent need raised by the decision makers from INGOs and Government, who looks forwards to integrating our knowledge in providing solutions to them. Map World Forum is offering platform and an opportunity for these activities and more. This forum could create culture of usage of GEO-ICTs for new solutions or reduce natural hazards in many parts of the World.

ICA welcomes Map World Forum as a platform for fruitful cooperation between various geodisciplines to solve urgent problems of contemporary world. ICA as a representative world body for cartography is supporting this forum and will actively participate in it.



IAN DORMAN

| **President** |  
| International Society of Photogrammetry  
and Remote Sensing (ISPRS) |

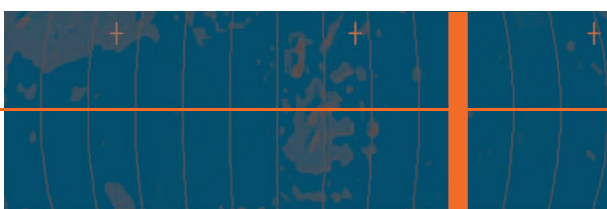
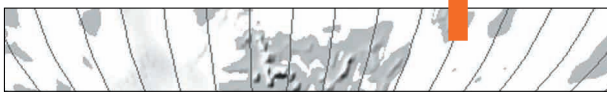
The mission of ISPRS is to promote photogrammetry, remote sensing and the spatial information sciences at an international level. This coincides with the aim of Map World Forum to be a medium of convergence of various stakeholders of the global geospatial community and to promote the integration of end users of geospatial information into this community. This meeting is an excellent opportunity for international organisations involved in the production and use of geospatial data to come together and discuss the challenges and opportunities which face the industry. In the world where rapid development is taking place, it is essential that all stakeholders discuss how they may work together to make efficient use of geospatial data.



PETER HOLLAND

| **President** |  
| Permanent Committee on GIS  
Infrastructure for Asia and the Pacific  
(PCGIAP) |

The geospatial community is steadily growing and evolving in response to changing and emerging needs and challenges. Its role at all levels of human activities is increasingly important. Map World Forum, undoubtedly one of the largest events of its kind, showcases the expertise and cutting-edge technology of this geospatial community. I trust it will be an inspiring and enlightening experience for every participant.





The programs cover the whole spectrum of geoinformatics from technology to policy and from supplier to user issues, while future directions including integration with other domains will be discussed as well. It will provide us with an excellent opportunity to develop regional and global partnerships, which will strengthen the geospatial community as a whole.



MARK REICHARDT  
| **President** |  
| **Open Geospatial Consortium (OGC)** |

The Map World Forum is an aptly named title for this very important event – map information and its exploitation is important enough to be worthy of a world forum and this is the ideal venue. The Open Geospatial Consortium, Inc., as the world's leading geospatial implementation standards development organization is proud to be part of Map World Forum. Our participation in Map World Forum is one way we play that role. This is our chance to bring the message of open, interoperable geospatial information and services to decision makers across government and industry, and to the consumer. I hope you join us in January 2007 for this very special event.

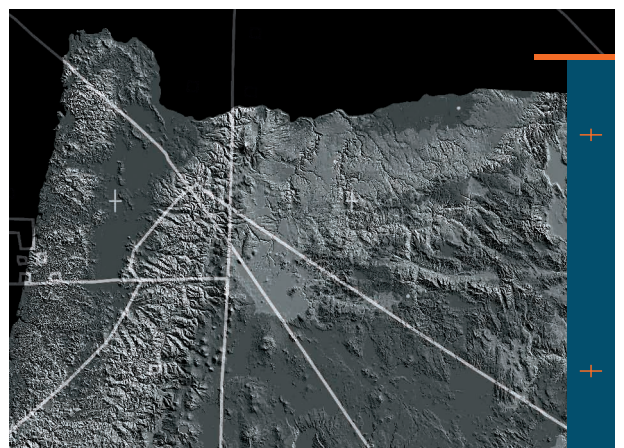


ROBERT M. SAMBORSKI  
| **Executive Director** |  
| **Geospatial Information & Technology Association (GITA)** |

The Board of Directors and members of the Geospatial Information & Technology Association are pleased to lend enthusiastic support to the 2007 Map World Forum. We take great pride in joining a very distinguished group of partners and sponsors from around the world to contribute to what will be an extraordinary event in Hyderabad.

We at GITA “envision a world in which the daily lives of people everywhere are enhanced and enriched by use of geospatial information and technology” – this is our vision of the future. We anticipate with great interest the opportunity to share with the world how we are working to achieve that vision, by contributing a special application oriented seminar on how the leading utilities and local governments are leveraging geospatial technology to protect critical infrastructure and improve the delivery of essential services to the public.

I am pleased to invite our geospatial colleagues from around the world to participate in the Map World Forum and I look forward to a stimulating and enriching experience for all involved.





# Map World Forum

## Inauguration

## Plenary

- Geographic Information as Public Utility
- Convergence And Geospatial Industry
- Geospatial Technology: Return on Investment
- Geospatial Information: Pricing Policy and Consumption

## Seminars

- Cartography
- Aerial Photogrammetry & Remote Sensing: Digital Sensor Systems and Automatic Production
- Surveying and Mapping
- LIDAR
  
- Geospatial Technology in Utilities and Critical Infrastructure Protection: Recent Trends
- Urban Renewal and Information Systems
- Disaster Management
- Health and Community Development
  
- Public-Private Partnerships in Geospatial Domain
- Standards and Interoperability
- Spatial Data Infrastructure
- Global Outsourcing in Geospatial Industry

## Workshops

- GIS Ethics In Spatial Data Infrastructures Development
- Intellectual Property Rights And Geographical Informations
- Project Management
- Global Earth Observation Systems

## Editor's Forum

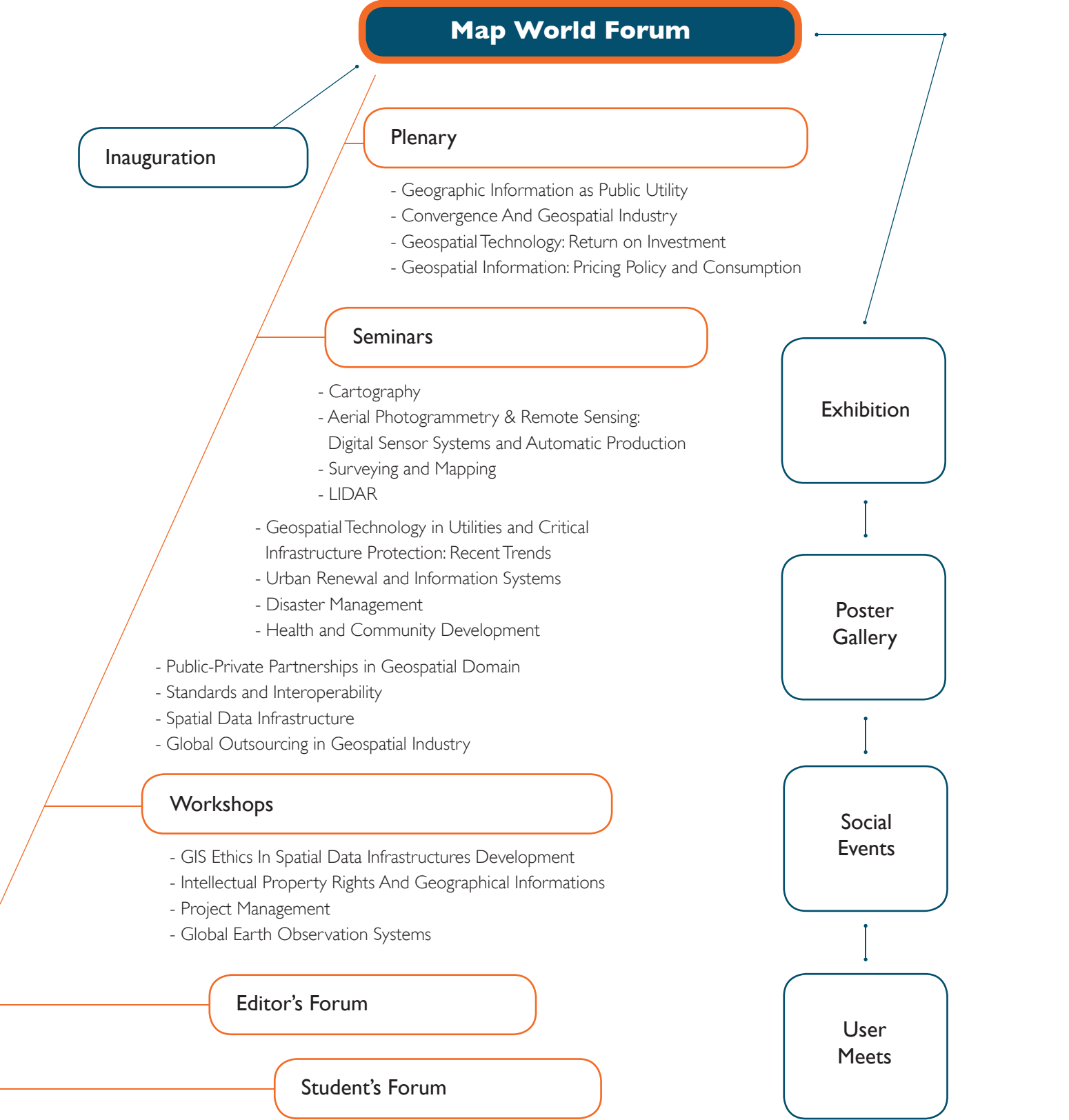
## Student's Forum

## Exhibition

## Poster Gallery

## Social Events

## User Meets





# Plenary Sessions

## GEOGRAPHIC INFORMATION AS PUBLIC UTILITY

Geographic Information is now being used extensively to provide solutions for public utilities. It is enabling the user to analyse data layers of interest including service area boundaries, exchanges, hotels, schools, roads, political districts, states, cities, country boundaries, railroad crossings, etc. apart from many other important information.

This session aims at methods for generation of physical, legal, economic or environmental information or characteristics concerning land, water, groundwater, subsurface resources or air in any place, and even beyond this for the public.

## GEOSPATIAL TECHNOLOGIES: RETURN ON INVESTMENT

Last couple of decades has seen the threshold barrier of GIS implementation coming down in terms of hardware, software and data availability. This has led to increasing implementation of GIS in utility services, infrastructure projects, agriculture, environment, natural resource management etc. But is it leading to tangible or intangible benefits?

This session will have discussion on project case studies from selected vertical application segment, highlighting the cost of implementing GIS and benefits derived in short term and those expected over long term.

## CONVERGENCE AND GEOSPATIAL INDUSTRY

In this evolving world, where the technology is changing at a fast pace. Along with this it is becoming more intertwined and inter-related. This is also true with the field of Geospatial Technology. In fact, the availability, usability and volume of online geospatial content are functions of the convergence of web services, spatial databases, standards and open architectures, web-accessible sensor networks, and visualization. In addition, many of the applications provide access to geospatial content via mobile devices and are being used for decision support as part of an enterprise workflow.

This session aims at discussions on convergence of geospatial technologies along with changes in the mainstream information technology. It will also attempt to highlight the potential benefits of the new technologies.

## GEOSPATIAL INFORMATION: PRICING POLICY AND CONSUMPTION

There are various schools of thought viz. 'Charge vs. No Charge', regarding the issue of charging for government generated or owned geospatial data, which affects a large number of infrastructure, utility, natural resource management and business intelligence projects.

This session will feature a debate-cum-discussion amongst prominent personalities from the geospatial data provider and consumer fields who will argue out the pros and cons of charging for spatial datasets.

# Seminars

## CARTOGRAPHY

| International Cartographic Associations (ICA) |

From Stone Age cave walls to today's digital maps; cartography has been the language of documentation. What are today sought by antique collectors – the hand drawn maps of world travellers, which were more useful as sketches of the travelogue, have through the last century become multi thematic layered documents prepared with deep understanding of the earth's shape and reference systems.

Compared to paper, digital maps bring greater precision, flexibility and a broader range of applications. The capability of attaching volumes of information to these maps has made them an indispensable tool. The whole science of cartography has metamorphosed and gelled with other geospatial sciences. This seminar will be a curtain raiser on these recent developments and will showcase the upcoming trends.

**ICA** promotes the discipline and profession of cartography in an international context. ICA is the world body for cartography, the discipline dealing with the conception, production, dissemination and study of maps.

**Chair** | Prof. Milan Konecny

President, International Cartographic Association

## AERIAL PHOTOGRAMMETRY AND REMOTE SENSING: DIGITAL SENSOR SYSTEMS AND AUTOMATIC PRODUCTION

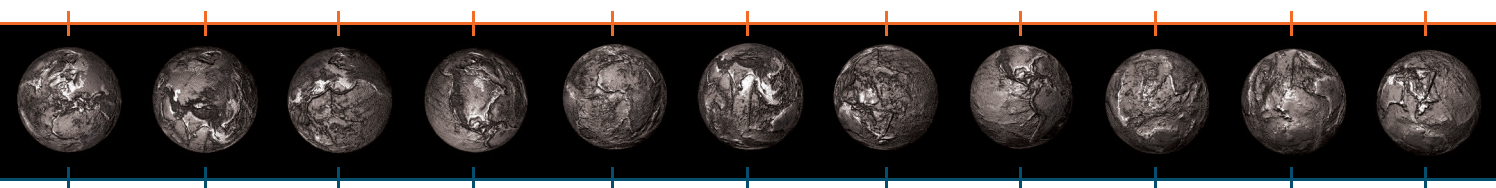
| International Society of Photogrammetry and Remote Sensing (ISPRS) |

Much has happened in aerial photogrammetry and remote sensing for topographic mapping tasks over the last few years. In the sensor domain noteworthy developments comprise the availability of sub-meter imagery from space on a regular basis, successful commercial use of digital aerial cameras and laser scanners, and possibility to measure image orientation parameters directly in the air by means of a combination of GPS and inertial measurement techniques. As far as production of geospatial information from imagery is concerned, an ever closer link to GIS can be observed. Another recent development is the increased demand for digital imagery and geospatial data for use in the internet, exemplified by applications such as Goggle Earth and Microsoft's Virtual Earth.

**ISPRS** is an international NGO devoted to the development of international cooperation for the advancement of research, and development in the photogrammetry, remote sensing and spatial information sciences, their integration and application, to contribute to the well being of humanity.

**Chair** | Prof. Christian Heipke

University of Hanover, Germany



# Seminars

## SURVEYING AND MAPPING

| International Federation of Surveyors (FIG) |

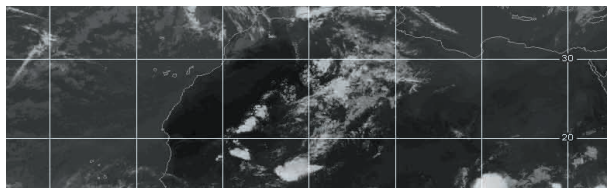
The entire earth surface may have been scanned at reasonable high resolutions, but apart from the urban centers and developing townships, rural areas where a majority of the population resides, is still unmapped or under surveyed from a cadastre point of view. The concept of a 'Global Rural Cadastre' has been muted often in light of modern rapid but accurate land survey techniques.

The seminar on Surveying and Mapping will address the issue of 'Global Rural Cadastre'. The various issues that have hampered cadastral surveys and land mapping efforts in various parts of the world will be deliberated upon and lessons learnt.

**FIG** is a federation of national associations and is the only international body that represents all surveying disciplines. It is a UN-recognised non-government organisation (NGO) and its aim is to ensure that the disciplines of surveying and all who practise them meet the needs of the markets and communities that they serve. It realises its aim by promoting the practice of the profession and encouraging the development of professional standards.

**Chair** | Prof. Holger Magel

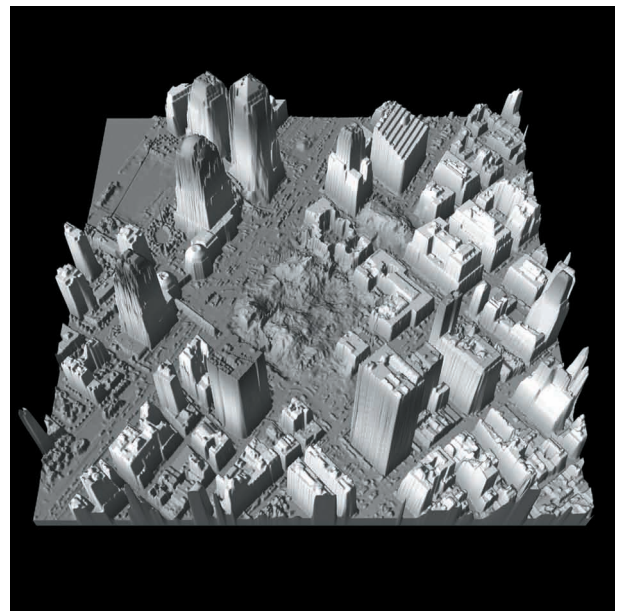
President, Federation of International Surveyors (FIG)



## LIDAR

LIDAR (Light Detection And Ranging) technology has matured through the years and is today being used not just as a research tool but a 3D data acquisition tool which has been used for applications as varied as flood mapping, vegetation representation to generating accurate DEMs of a urban or rural landscape. LIDAR surveys require technology amalgamation from inertial navigation, GPS, laser and image processing. Each of these forms an integral part of the LIDAR survey. Further refinements are available in the kind of LASER used. The surface to be surveyed decides the wavelength of the laser that is used.

The increased need of higher temporal resolution in urban maps of fast developing and changing areas makes LIDAR an indispensable tool. This seminar will we a technical run down on all the practical issues involved in LIDAR surveys.



# Seminars

## GEOSPATIAL TECHNOLOGY IN UTILITIES AND CRITICAL INFRASTRUCTURE PROTECTION: RECENT TRENDS

| Geospatial Information & Technology Association (GITA) |

The Geospatial Information & Technology Association will conduct a seminar on what leading gas, electric and water utilities are doing to protect their critical infrastructure investments, while providing improved levels of services to public. The seminar will also include the latest developments in local government use of GIT and how geospatial technology is playing an increasingly important role in critical infrastructure protection and underground damage prevention.

Following a high level overview of the current status of GIT use in utilities and local government agencies, technical perspectives will be provided by an internationally diverse group of infrastructure practitioners to illustrate the state of the art of digital mapping technology in these sectors. A panel discussion will then bring together the technical and operational aspects of presenters' experiences.

**GITA** is a non-profit education association serving the global geospatial community. Through its conferences, seminars, chapter events, webcasts, and publications, GITA provides a unique forum for geospatial professionals to exchange ideas and experiences.

**Chair** | Robert M Samborski  
Executive Director, Geospatial Information and Technology Association, USA

## URBAN RENEWAL AND INFORMATION SYSTEMS

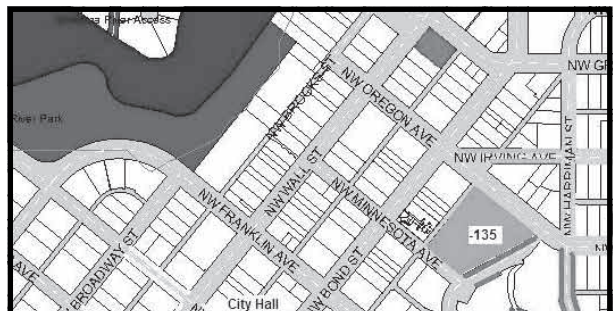
| Dubai Municipality |

Rehabilitation of impoverished urban neighborhoods by large-scale renovation or reconstruction of housing and public works is what urban renewal is all about. Every growing city in the world undergoes this process. It starts with programs designed to clear, rebuild, and redevelop urban slums. An information system needs to be in place to monitor the development and disbursement of the developed plots. An information update and retrieval system coupled with a spatial information system is what is presently used.

This seminar aptly conducted under the auspices of the Dubai Municipality, will consist of presentations on methods and procedures involved in the establishment of a robust spatial information systems customised for urban renewal applications.

**Dubai Municipality** is regarded as one of the largest establishments in Dubai in terms of the number of people it employs, the volume of services it provides to the public and the projects it carries out. Dubai Municipality is the major driving force behind the development process of Dubai City as a whole.

**Chair** | Er. Mohamed Al Zaffin  
Director, GIS Centre, Dubai Municipality, UAE



# Seminars

## DISASTER MANAGEMENT

| National Disaster Management Authority (NDMA) |

Communication and emergency information management for natural or human-made disaster can make or break a Disaster Management Plan. Today, practical new tools and methods for effective development and implementation of Emergency Management Plans (EMPs) using innovative GIS approaches to emergency management--nationally and internationally are available. This seminar will provide a platform for experience-sharing on the application of geo-spatial technologies in various phases of disaster management. This Seminar will bring together professionals and provide them an opportunity to benefit from some of the best practices of applications of geo-spatial technologies in natural disasters and man-made disasters.

**NDMA**, headed by the Prime Minister of India, is responsible for drawing up and monitoring the implementation of disaster management plans, ensuring measures for prevention and mitigation of disasters and for undertaking a holistic, coordinated and prompt response to any disaster situation. It provides the policies and plans for disaster management in India.

**Chair** | Prof. V K Menon

Member, National Disaster Management Authority, India

## HEALTH AND COMMUNITY DEVELOPMENT

| Centre for Science, Development and Media Studies (CSDMS) |

Geographical Information System has become an important tool for professionals in the domain of public health. It is helping in the tracking of the status and distribution of health indicators. Epidemiologists, public health administrators, certified environmental hygienists and other public health professionals are utilizing GIS to map out the spatial distribution of various diseases and its variation over space and time. The Map World Forum would provide a platform for discussion of how this technology can help in decision making as well as designing health policies at various levels of the government.

Also at the Forum decision makers from across the globe would discuss the appropriateness of GIS technology to rural development, forest management, urban planning and land information systems. Educationists, planners, researchers, decision makers, administrators and officials from various organisations would be invited to discuss the role of GIS Technology for ensuring sustainable development and socio-economic and educational uplifting of communities in the developing nations.

**CSDMS** is an NGO committed to advocacy and developing solutions for under-privileged societies through the use of innovative and effective Information and Communication Technologies and Geographic Information Systems. It targets to meet the needs of society in the development sector through research in the field of GIS and ICT.

**Chair** | Dr. Ravi Gupta

Director, Centre for Science Development and Media Studies, India





# Seminars

## PUBLIC - PRIVATE PARTNERSHIPS IN GEOSPATIAL DOMAIN

The pressures of globalisation, the need of privatisation and demand for quality and up to date data from the worlds survey organisations has led to grass root changes in some of the leading national survey organisations. Collaborations between government departments and private companies is slowly becoming the norm.

The models of partnership between public and private enterprises are many and the choice depends on the prevalent political and business thought. The success or failure of such partnerships also depends on the financial models followed. This seminar will bring together partners in such enterprises who will share their experience with the participants.



## STANDARDS AND INTEROPERABILITY

| Open Geospatial Consortium (OGC) |

Open consensus based standards are crucial to advancing new levels of interoperability needed in this increasingly complex world. The members of the Open Geospatial Consortium, Inc. provide implementation level standards that promote plug and play interoperability for geospatial information and services because our members believe that the societal benefits of doing so are overwhelming. OGC facilitates proven processes to advance new standards needed by the global community.

This seminar will provide a foundation of knowledge about OGC's framework of open standards for web and location based services. Related sensor web standards will be discussed along with a preview of standards "coming soon". In addition to detailed discussion of their standards, known as OpenGIS Implementation Specifications, the seminar will provide an overview of how geospatial standards fit into broader Information Technology standards and will delve into some detail on the OGC consensus processes. The return on investment associated with the implementation of OGC standards will also be discussed. Come and learn about the OpenGIS® family of specifications and the OGC Reference Model that guides the creation of interoperable systems and enterprise solutions.

**OGC** is a non-profit, international, voluntary consensus standards organization that is leading the development of standards for geospatial and location based services. Through their member-driven consensus programs, OGC works with government, private industry, and academia to create open and extensible software application programming interfaces for geographic information systems (GIS) and other mainstream technologies.

**Chair** | Mark Reichardt  
President, Open Geospatial Consortium



# Seminars

## SPATIAL DATA INFRASTRUCTURE

| Global Spatial Data Infrastructure (GSDI) |

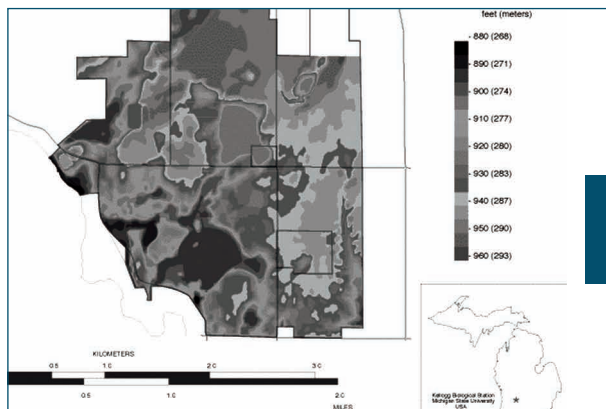
Spatial data infrastructures (SDIs) provide a basis for spatial data discovery, evaluation, and application, and include the following elements: Geographic data, Meta data, Framework, Services, Clearinghouse, Standards, Partnerships, Education and Communication.

This seminar will review these elements and suggest practical means for progressively improving SDI from local to global scales.

**GSDI Association** is an inclusive organization of organizations, agencies, firms, and individuals from around the world. The purpose of the organization is to promote international cooperation and collaboration in support of local, national and international spatial data infrastructure developments that will allow nations to better address social, economic, and environmental issues of pressing importance.

**Chair** | Harlan Onsrud

President, Global Spatial Data Infrastructure



## GLOBAL OUTSOURCING IN GEOSPATIAL INDUSTRY | GIS Development |

In view of ever increasing demand for more and more updated and larger scale maps, outsourcing in geospatial industry is also increasing every day. Today most of the countries in Europe and North America are outsourcing data creations, management and customization jobs to mainly Asian countries, who have a good pool of technically qualified manpower and adequate infrastructure to serve the above needs at much reasonable costs. On the one hand global outsourcing is helping to expedite the process of creation and updation of maps and on the other hand, it offers an opportunity for Asian companies to build their capacities and grow the local geospatial industry.

India is the hub of global outsourcing in general and Information Technology in particular. Within the framework of information technology GIS enabled services have been growing at an amazing speed. In addition to serving the local needs, Indian geospatial industry is also catering to global GIS requirements. Map World Forum being held in India, offers a great opportunity for global geospatial industry to visit India and understand the available GIS enabled capacities and infrastructure to be able make long term partnerships for outsourcing. The proposed seminar will address the various aspects of outsourcing and also provide an opportunity to interact, network, and partner with prospective service providers.

**GIS Development** promotes and propagates the usage of Geographic Information Science, Technology and Applications in various areas of development, worldwide and Asia in particular. It fosters the growing network of those interested in geo-informatics and encourages the exchange of scientific know-how through its key platforms: Magazines, Portal, Conferences and Training.



# Workshops

## GIS ETHICS IN SPATIAL DATA INFRASTRUCTURES DEVELOPMENT

Presented by | **Roger Longhorn**

| Director, Info-Dynamics Research Associates Ltd. |

National and international professional bodies have developed Codes of Ethics that apply either directly or indirectly to GIS practitioner, at the personal and corporate level. Similarly, codes of conduct are established for government officials, also nationally and internationally. The workshop will investigate the role of ethics at the personal, corporate and government levels in relation to meeting the stated goals for SDIs. Among the issues covered are:

Ethical use of public sector information, 80% of which has a geospatial attribute ethical codes of conduct for GIS/IT professionals in relation to general codes of conduct for government officials.

Ethics of personal privacy versus government surveillance for personal protection.

How to address potential misuse of GIS technology at the practical level.

**Roger Longhorn** | has been involved in the ICT industry for 30 years. As an independent consultant, he conducts PhD-level research in information infrastructure and information society issues. He is also a contributing journalist to many international Geomatics magazines.

## INTELLECTUAL PROPERTY RIGHTS AND GEOGRAPHICAL INFORMATIONS

Presented by | **Prof. George Cho**

| University of Canberra, Australia |

Legal issues use of data sets and software tools, liability and protection of privacy, distribution and use of spatial

data etc. have become an obvious concern in the promotion, efficiency of R & D activities and the ultimate delimitation of the potential of Geographic Information Systems. Legal considerations should be kept in mind before creation and implementation of large projects to avoid exploitations, misuse and also accountability of the product generators. This workshop touches on the rights and legal issues related to GIS in the field of public access, liability, privacy, GIS data as evidence and copyrights.

**Prof. George Cho** | His research focuses on the study of the legal and policy issues affecting GIS and the practical problems in the application of technology in the creation, use and impact of digital spatial information.

## PROJECT MANAGEMENT

Presented by | **Prof. A R Dasgupta**

| University of BISAG, India |

The emerging challenges of handling GIS projects needs technical skills in defining, planning, organizing, executing, instilling team efforts, negotiating, along with problem solving and decision making. Effective data management is essential in controlling liabilities and risks, and also forms a critical component of any project.

The aim of this workshop will be exchange of management solutions of projects and bring added value to a client's requirement by transforming data into the information fundamental to strategic decision-making.

**Prof. A R Dasgupta** | former Director of Space Application Centre, Ahmedabad, India. Prof Dasgupta is also a Past President of Indian Society of Geomatics.

# Forums

## EDITOR'S FORUM

In today's networked world, there are still starkly visible media dark countries. The reasons for this bias in issue coverage can be many and can be put to debate so are issues about changing temporal demand of media coverage. This could lead to role reversal among the print and digital media. The Editors forum will discuss and deliberate on these burning issues with regards to the geospatial media.

## STUDENT'S FORUM

Our industry today has an acute shortfall of well trained and motivated minds who will take up challenging assignments. Many a times this is due to the lack of communication between the industry and the academia. To bridge this gap a gathering of graduate and post graduate students who are working in fields related to geospatial technology and its applications where they will get to meet and interact with academia and industry. A open house session on future career options in upcoming fields from the geospatial domain is planned.

# Poster Session

The research papers submitted towards the various themes covered under the auspices of the forum will be on display for the duration of the forum. Participants will get an opportunity of one to one interaction with the authors to discuss, share and learn about the present day and future applications of geospatial technologies.



# Exhibition

The exhibition will be a lively display of cutting edge technology in remote sensing, photogrammetry, surveying, cartography, 3D visualisation, map production and allied fields. Developers of very high end GIS, Image processing, data rectification software will also be showcasing their products. Global government agencies will participate to project their capabilities to a world audience.

## Fee

Exhibition Fee (per square metre)

### INDIAN COMPANIES

Shell Scheme INR 15,000

Non-Shell Scheme INR 14,000

### OVERSEAS COMPANIES

Shell Scheme US \$ 400

Non-Shell Scheme US \$ 375

## Facilities

Exhibition space taken under shell scheme will be provided with built-up exhibition booth, table, chairs, spotlights, power points and carpeted floor.

Under non-shell scheme, only raw exhibition spaces with floor marking will be provided. The exhibitors are free to design and construct their own stand as per the guidelines mentioned in the Exhibitor Manual.

For exhibition space booking contact

**ANNU NEGI**

[exhibition@mapworldforum.org](mailto:exhibition@mapworldforum.org)

For details on Exhibition and Floor Plan visit -

[www.mapworldforum.org](http://www.mapworldforum.org)

# General Information

## Conference Venue & Dates

Hyderabad International Convention Centre, India

22 – 25 January 2007

The Hyderabad International Convention centre built by Emaar Properties of Dubai with a seating capacity of 4,000, is India's largest and the most technologically advanced convention facility. It is an integrated 291,000 square foot facility with a 300-room capacity business hotel covering 15 acres. It is equipped with several automated features to facilitate diverse utilisation, including all facilities and amenities that a world standard gathering would ever have.

## Weather & Clothing

At the time of the conference and exhibition, Hyderabad will be pleasant, with daytime temperatures ranging from 20 to 30 degrees Celsius. Nights can however be bit cool. Carrying slightly warm clothes is recommended.

## Currency

The unit of the Indian currency is the Rupee. Travellers can bring into India any amount of foreign exchange, subject to the condition that on arrival a declaration is made to the custom authorities in a Currency Declaration Form. Travellers Cheques in US Dollars and Pounds are easily exchangeable and ATMs are available in major Indian cities. Credit cards are accepted in hotels and large stores. The conversion rate with US Dollar is approximately US\$ 1 = Rs 45.

## Important Deadlines

Abstracts Submission 15 September 2006

Paper Acceptance 15 October 2006

Full Paper Submission 15 December 2006

SEND ABSTRACTS AT [PAPERS@MAPWORLDFORUM.ORG](mailto:PAPERS@MAPWORLDFORUM.ORG)



#### INDIA OFFICE

GIS Development Pvt Ltd

G-4, Sector - 39,

Noida (U.P.) - 201301

India

Tel: +91-120-2502180-87

Fax: +91-120-2500811

Email: [info@mapworldforum.org](mailto:info@mapworldforum.org)

#### UAE OFFICE

GIS Development Branch

Dubai Airport Free Zone Area

P.O. Box No: 54664,

Dubai, UAE

Tel: +971-4-2045350, +971-4-2045351,

Fax: +971-4-2045352

Email: [info@mapworldforum.org](mailto:info@mapworldforum.org)

#### MALAYSIA OFFICE

GIS Development Sdn. Bhd.

Suite - 22.6, level - 22

Jalan Sultan Ismail - 50250

K.L., Malaysia

Tel: +603-21447635

Fax: +603-21447636

Email: [info@mapworldforum.org](mailto:info@mapworldforum.org)